

STREAM DISCOVERY REPORT

Deep insights on your holistic profile and recommended stream paths according to your strengths.

अnāgat

Building Careers Building Lives



Name ~~XXXXXXXXXX~~

Class: 8

Your Orientation Style

What is Orientation Style?

Orientation style identifies what an individual is driven by. Understanding the orientation style will help you with career decision based on your dominant style of interaction with the surroundings.

Your Dominant Style



Creative Orientation

The scores obtained on this style inventory indicate that you seek novelty and like to work with your ideas. You are curious to understand the know-how of things and their functioning. You wish to have your own ways of doing things with unique ideas. You like to feel free to create, discover and synthesize new products from abstract notions and concepts. You may prefer to work in unstructured situations where you can experiment with your intuitive ideas. You may be observed as independent, original and expressive at the workplace.

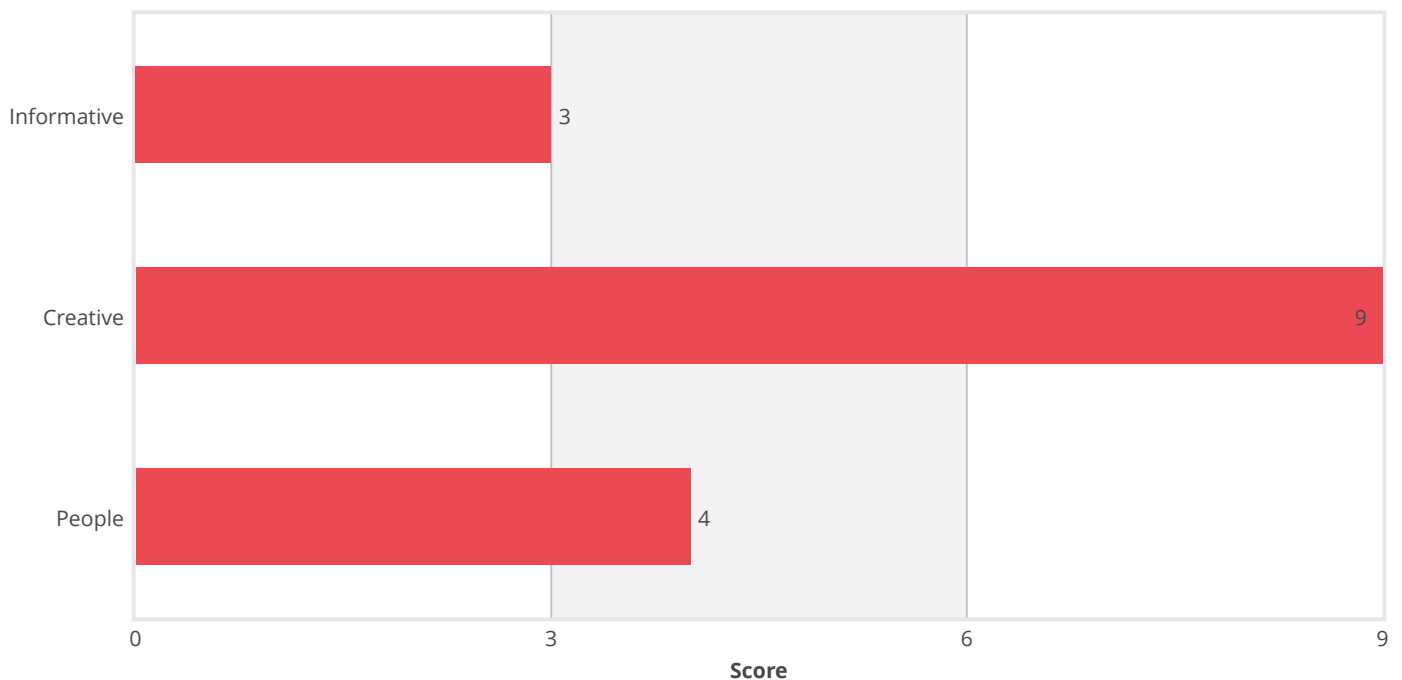
Your Secondary Style



People Orientation

The scores obtained on this style inventory indicate that you are people-oriented. This means that you like to interact with people and have an understanding of their problems and needs. You are drawn more to seek close relationships with others. Your style indicates that you will be good in tasks in which you have to lead, direct and persuade others. You cooperate well with others and can express yourself clearly. You make friends easily and are observed as trustworthy, social and helpful at the workplace.

Your Orientation Style



Your Interest

What is Interest?

Understanding your Interest will help you identify what work areas excite you and helps you identify career options which are personally rewarding. Interest assessment explores your interest across multiple career options to find the right match which shall keep you engaged.

Your Dominant Interest Areas



Designing



Economics



Political Science

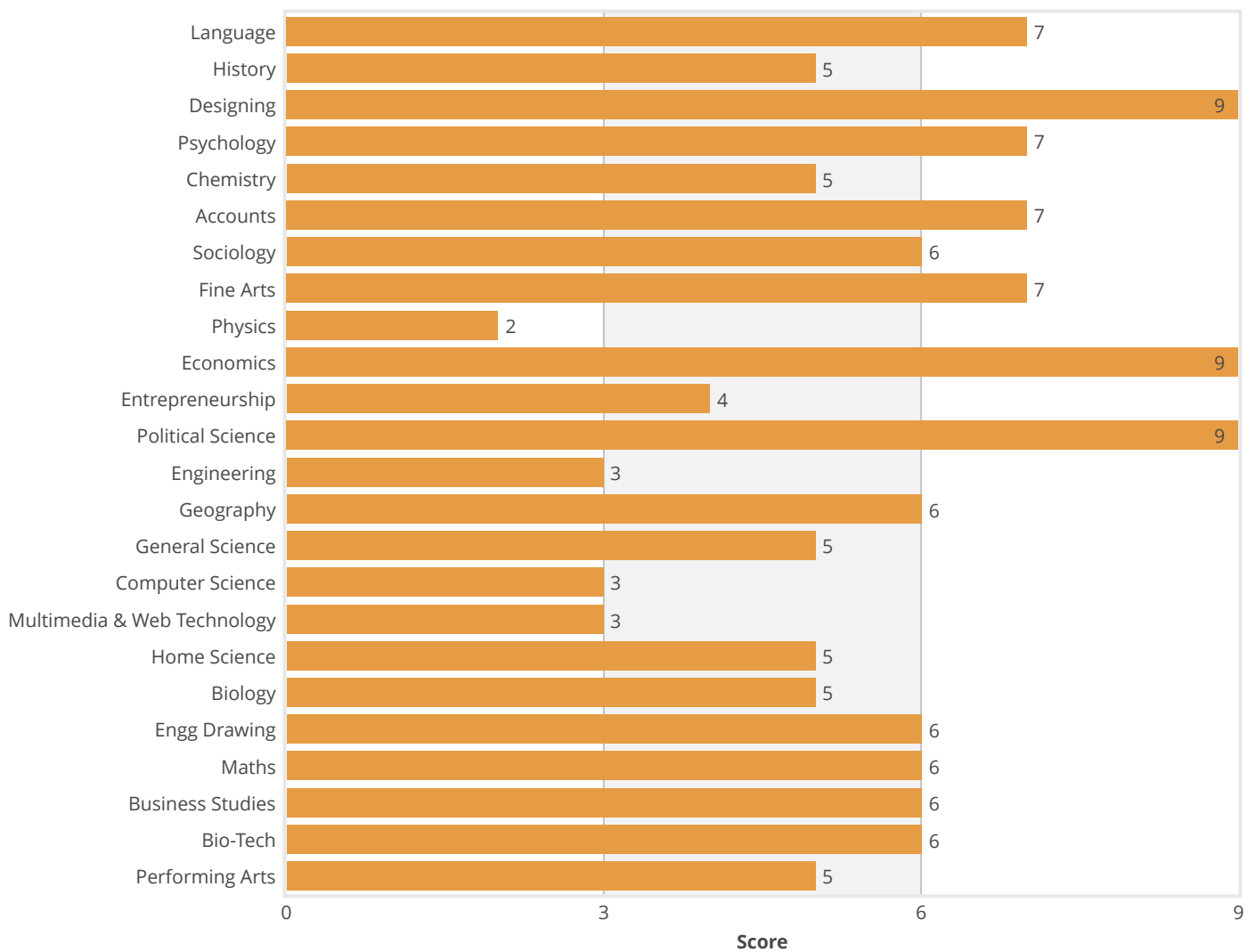


Accounts



Language

Your Interest



Your Personality

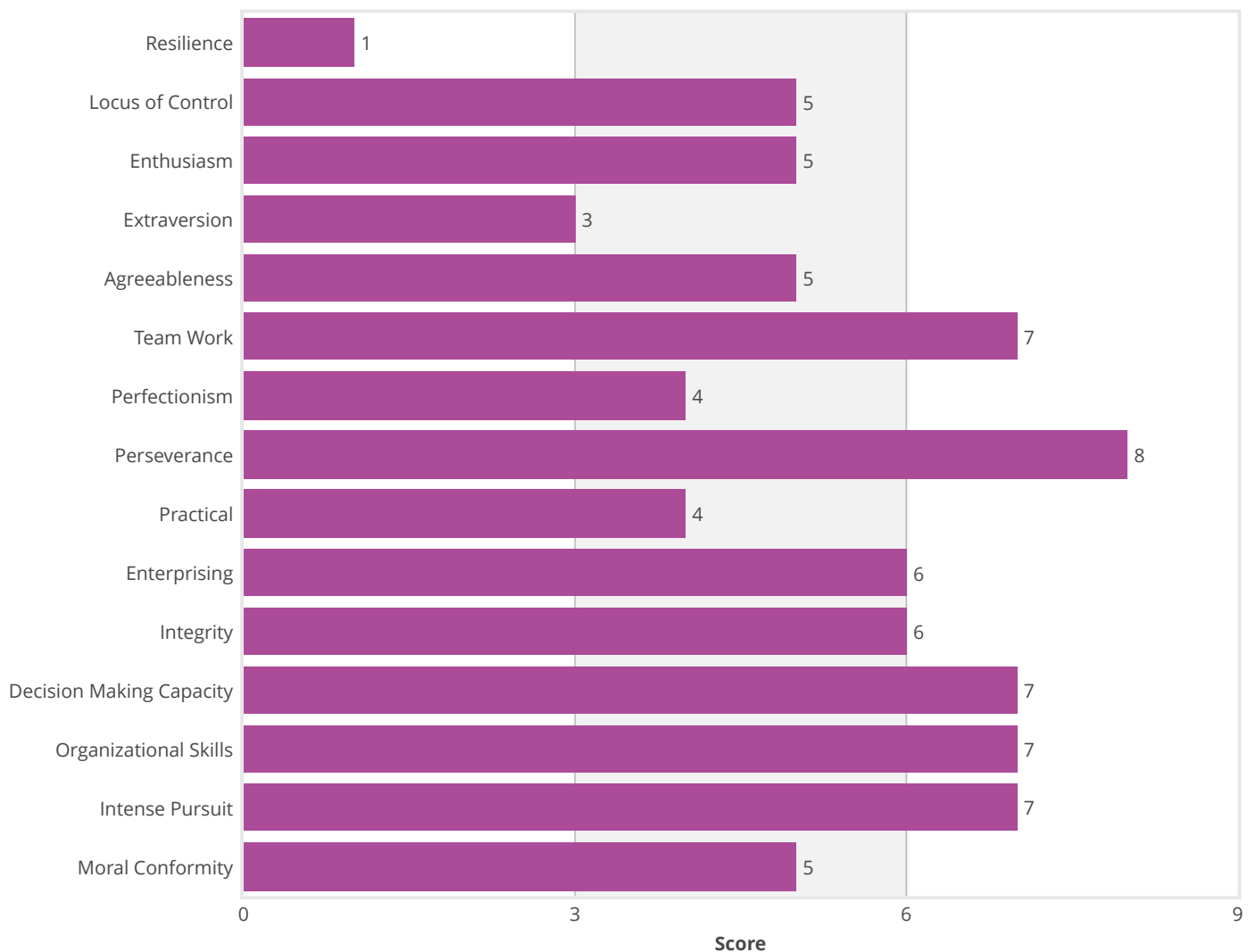
What is Personality?

Understanding your Personality will help you identify your consistent behavior patterns. Every individual is different due to their unique blend of attributes. Personality assessment identifies what career options suit your style and match your personal attributes.

Your Dominant Personality Traits



Your Personality



Your Personality in Detail



Resilience

1 2 3 4 5 6 7 8 9

Meaning

Resilience is the ability to pursue chosen path despite stress, high-risk status, challenges and hardships

Expert Analysis

Your responses indicate that you don't exhibit competence under stressful conditions and hardly display courage, adaptability, and endurance. You tend to avoid challenges and see them more as a burden rather than excitement or an opportunity to grow. You are likely to falter when it comes to sticking to your tasks & defined schedule. You may also find it difficult to bounce back from setbacks or failures. You generally prefer to choose a safe path

Development Plan

You can improve your resilience by using the following strategies -:

- **Learn to be more flexible.** It is always better to embrace change and adapt as per the requirements. It helps in handling stress in a better manner and work more effectively.
- **Be optimistic & do not lose hope.** It is always better to be optimistic during hardships. A sense of optimism helps in dealing with difficult situations.
- **Learn to tackle your problems step by step.** Think of taking small steps while resolving problematic circumstances.
- **Develop a strong social network.** Being with people that are supportive and encouraging can be very helpful in facing hardships



Locus of Control

1 2 3 4 5 6 7 8 9

Meaning

Locus of Control is the individual's perception of the power they have over events that happen in their lives. People with this trait believe that they have control over their own destiny and are convinced about their own skills

Expert Analysis

You feel that all your abilities, skills and reinforcement are dependent on your luck and external factors. You feel better when you get directive from others, as your decision-making is may be low which makes you less of a leader and more of a follower. You are not very good in situations where initiative is to be taken and your dependency is high making you less independent in nature

Development Plan

You can improve your internal locus of control through following strategies -:

- **Be assertive:** You have to start speaking up your mind and take responsibility for your acts as blaming others would not work in life.
- **Develop trust:** After understanding your strengths, you have to start trusting yourself. Believe in whatever you do or perform. Strong level of trust in oneself makes a person confident and composed.
- **Stop being judgmental:** Stop judging all your actions and go easy on yourself. Demanding too much sometimes leads to drainage of strength and hence failures.
- **Be relaxed and rejuvenate yourself:** Sometimes too much of stress to excel leads to panic and then everything you work on gets spoiled. Take timeouts to start regaining confidence in yourself.

Your Personality in Detail



Enthusiasm

1 2 3 4 **5** 6 7 8 9

Meaning

Synonymous with vitality, spiritedness & vigor, enthusiasm is having abundant or intense energy and curiosity to gather knowledge

Expert Analysis

You are not very enthusiastic to gain more knowledge from your surroundings. You tend to avoid new experiences and do not feel very energetic in general. Your energy levels are low most of the times and you are reserved in your interaction with others. If at the start of a project or goal you meet with setbacks, you may feel the urge to give up. This restricts you from questioning about your surroundings and consequently seeking answers

Development Plan

You can increase your enthusiasm by using following strategies:

- **Develop a sense of humor:** People with high enthusiasm, have a contagious sense of humor. Sulking about your life will further lower your spirits. Start looking at your problems as opportunities for new learning and experiences. When engaged in heated arguments, try to use humor to lighten the situation.
- **Start questioning:** You need to question the various happenings around you. This will help you to make efforts to seek answers to those questions. Do not hesitate to question and remember that nobody knows everything.
- **Healthy Lifestyle:** If you are exhausted, with too much work, it is impossible to radiate enthusiasm. Take frequent rests between your work schedule and have adequate sleep in the night. Take a balanced diet along with physical workout on regular basis



Extraversion

1 2 **3** 4 5 6 7 8 9

Meaning

Extraversion is the ability to talk easily to others, assert viewpoints and prefer working in groups, rather than working alone

Expert Analysis

You prefer to spend time alone rather than being part of any social gathering. You find it very hard to approach strangers. You prefer working alone rather than in a group. Expressing opinions in the presence of others is very difficult for you

Development Plan

You can look to increase your extraversion level by using the following strategies -:

- **Developing interpersonal skills:** Try to communicate with people around you. This might be difficult at first, but you can keep trying and soon you will learn how to initiate a conversation and how to go about the whole process of communicating and sharing your views.
- **Find social activities you enjoy:** Sign up for hobby classes or volunteering activities or associate with new groups of people. Its easier to connect with people if you have a shared interest.

Your Personality in Detail



Agreeableness

1 2 3 4 5 6 7 8 9

Meaning

Agreeableness is the ability to sympathize with others, trust them and be warm, concerned and cooperative towards them

Expert Analysis

You are not very optimistic about human nature. You believe that excepting few, people are generally not trustworthy, considerate or cooperative. You believe that self-interest should take precedence over the social interest in most situations. You may find it hard to genuinely empathize with most people. You easily get into conflicts with others and may find it difficult to maintain social harmony

Development Plan

You can increase your agreeableness level by using following strategies:

- **Try to see things from perspective of others:** This will help you better understand the behavior of other people and also the reasons why they behave in certain ways. Also check on how you would have reacted in a similar situation.
- **Accept that all people are different:** Rather than competing with others and suspecting their intentions, it is better you understand that everyone is unique. This will help you to accept different viewpoints and also maintain social harmony.
- **Different people different voices:** Everyone has a point of view which needs to be respected. Listening to these voices will help you to sympathize with them



Team Work

1 2 3 4 5 6 7 8 9

Meaning

Team work implies including not only your views but also the views of others while working towards a common goal. It involves working collaboratively with people and maximizing the team output

Expert Analysis

You have an excellent ability to work collaboratively within a group in order to achieve a common goal. You strongly believe in partnerships and find it very easy to relate to others. Your outstanding communication skills allow you to effectively communicate with others as well as to develop and maintain good relations with them. While taking a decision, you consider not only your own views but also that of others. All such qualities help you to work in harmony with others

Development Plan

You have scored well in this trait

Your Personality in Detail



Perfectionism

1 2 3 4 5 6 7 8 9

Meaning

Perfectionism is the desire to strive for flawlessness and set high standards of excellence

Expert Analysis

Your score stands for an average desire to strive for high standards of excellence. This indicates that you sometimes complete tasks without giving much attention to minute details. You usually don't look for faults or shortcomings in your own actions as well as that of others and accept them with ease. Due to this, you compromise on the standards of excellence. You don't feel the sense of responsibility while working on a task. Due to this, the quality of your work may suffer at times

Development Plan

You need to develop a sense of high standards of excellence. You can do this by:-

- **Detailing:** Break down a task into smaller steps and pay attention to minute details in every step. You can reward yourself for successfully completing every step with perfection.
- **Evaluate your performance:** Be honest while evaluating your performance and work on the areas wherein improvement seems necessary.
- **Set high standards:** You should make an attempt to set high standards of excellence for yourself. This will motivate you to work hard and ultimately perform better



Perseverance

1 2 3 4 5 6 7 8 9

Meaning

Perseverance is the determination of an individual to complete a task, irrespective of the obstacles

Expert Analysis

You show a high degree of determination towards achievement of a goal and strong endurance to overcome the challenges. Your dedication towards the goal persists irrespective of engaging with difficulties such as discouragement, failure, opposition, and rejections. You continue working towards the job despite the delays in success. You have good level of self-confidence and a natural urge towards hard labor

Development Plan

You have scored well in this trait

Your Personality in Detail



Practical

1	2	3	4	5	6	7	8	9
---	---	---	---	---	---	---	---	---

Meaning

Synonymous with pragmatic, real & hands-on; practical is being more concerned with practice than theory

Expert Analysis

You tend to hold on to theoretical assumptions and do not focus too much on its practical application. You may lose efficiency as a result of the gap between theory and practice. You also have a tendency to dismiss the role of experience and focus more on achieved qualifications. You may have many interesting ideas but they may lack realistic application

Development Plan

You can improve your tendency of being more concerned with theory rather than with practice by following certain strategies such as –:

- **Try it out** - Hands on experience will help you in testing of assumptions and your own belief.
- **Visualize reality** - Try to visualize the practical aspects of theories in day to day situations.
- **Challenge the status quo** - Don't go by pre-set standards or assumptions. Try to challenge the existing way of doing things.
- **Functional Connect** - Develop a functional connect between theory and its practice so as to have a more realistic understanding.



Enterprising

1	2	3	4	5	6	7	8	9
---	---	---	---	---	---	---	---	---

Meaning

Enterprising is being assertive, confident, high on risk-taking capacity, and having the ability to persuade others

Expert Analysis

You help people & groups, solve problems, and you very well know how to take advantage of the opportunities, which come across your way. Your credibility and creativity rules people's heart and your inner spirit to take charge of things without being asked to do so makes you a leader. You are not comfortable with stability; you are innovative and willing to take a calculated risk. You persistently set your goals and work hard to achieve them and use your imagination to solve complex troubles using novel ways

Development Plan

You can improve your enterprising skills through the following strategies:

- **Be willing to admit and learn from failures and weaknesses:** No one is perfect, and everyone makes mistakes. The most successful person is one who knows that the key to success is not in avoiding failures, but to learn from them. You should continue to improve yourself in every possible way.
- **Being confident:** Learning about any area/domain in detail helps you to become confident in that particular area. You can start by learning more about your hobby.
- **Maintain a positive attitude:** With a positive attitude, you are looking at the bright side of life. People are naturally attracted to you when you have a positive attitude. By being positive, you will lead a happier life, as well as be surrounded by other positive people.
- **Being passionate:** You need to be passionate about the work you do. Passion is contagious and it helps you in persuading others.

Your Personality in Detail



Integrity

1 2 3 4 5 6 7 8 9

Meaning

Synonymous with honesty, principled, sincerity, scruples; integrity means being honest and living by universal principles of right and wrong

Expert Analysis

You generally follow set rules with everyone and have an understanding of the right and wrong. You perceive that doing right is ethical and you give priority to that. You avoid doing wrong whenever you have conflicts between right and wrong. However, in certain situation, you may compromise on integrity to some extent by giving priority to your personal gains

Development Plan

Think of working on following strategies to improve on your integrity levels:

- **Right vs. Wrong Dilemma:** You should learn how to develop the difference between right and wrong and how you can deal with conflicting situations.
- **Place a rule book in your life:** Start afresh with new norms in your life. Begin with simple tasks and complete them on set timelines and gradually move to the bigger tasks. Give importance to set rules and strictly follow those rules. Be aware of your decisions and recognize your mistakes and try to not repeat them in future.
- **Accept ups & downs:** You should have courage to accept your failures along with appreciations for the achievements regardless of the person providing the feedback.



Decision Making Capacity

1 2 3 4 5 6 7 8 9

Meaning

Decision making capacity is the tendency to choose effectively from alternatives through reasoning and critical thinking

Expert Analysis

You have skills that enable you to take the decisions at the appropriate time. By anticipating future perspective, you are able to take decisions at the earliest possible. You evaluate the pros & cons of a situation and look for a logical approach towards decision making. High decision making capacity makes you capable to learn from the past difficulties and apply those learning in the future

Development Plan

You have scored well in this trait

Your Personality in Detail



Organizational Skills

1 2 3 4 5 6 7 8 9

Meaning

Organization skill is the ability and style of an individual to structure plan and meet their goals in a systematic manner

Expert Analysis

You have the capacity to act in a responsible manner. You achieve high standards and work in an ethical manner with respect to any task taken by you. The reason that you achieve high standards is that you have an enhanced ability to use your time, energy, and resources in an effective manner. You work in a very systematic way, and have a high ability to structure, plan, and meet your goals

Development Plan

You have scored well in this trait



Intense Pursuit

1 2 3 4 5 6 7 8 9

Meaning

Synonymous with dedication, devotion & zeal; intense pursuit is having a clear intention, aim, interest, commitment and strong desire to pursue on a chosen path

Expert Analysis

You are very determined and have a strong will power. You are very passionate about what you choose, and tend to devote all your energy and time to it. Your pursuit of goals is full of unmatched commitment and zeal despite various ups and downs. This quality of being focused in achieving your goals helps you make constant efforts until you reach your goal. Your ability to be intensely absorbed in your pursuits enables you to keep trying and making continued efforts until your goal is achieved

Development Plan

You have scored well in this trait

Your Personality in Detail



Moral Conformity

1 2 3 4 5 6 7 8 9

Meaning

Moral conformity implies standing by your principles & code of conduct rather than matching attitudes, beliefs, and behaviors to group norms so as to fit into the group

Expert Analysis

Your attitude and behavior is tilted towards what others believe rather than sticking by your principles of morality. You don't mind ignoring your own values to fit into your peer group. Though you believe in the society, cultural norms, rules, and interests of the society but on various counts your acts are not in conformity with the societal norms and consensus

Development Plan

You can work on following strategies to work on improving moral conformity levels:

- **Be Assertive** – Make an attempt to put forward your point of view with conviction
- **Think of Long Term Impact** – Avoid short term gains or giving in to temptations
- **Right Associations** - Form Associations with people who have clear understanding of right and wrong
- **Learn to say 'No'** - Saying 'No' will not spoil your relationships with others, rather it will help you make meaningful & stronger relationships.

Your Aptitude

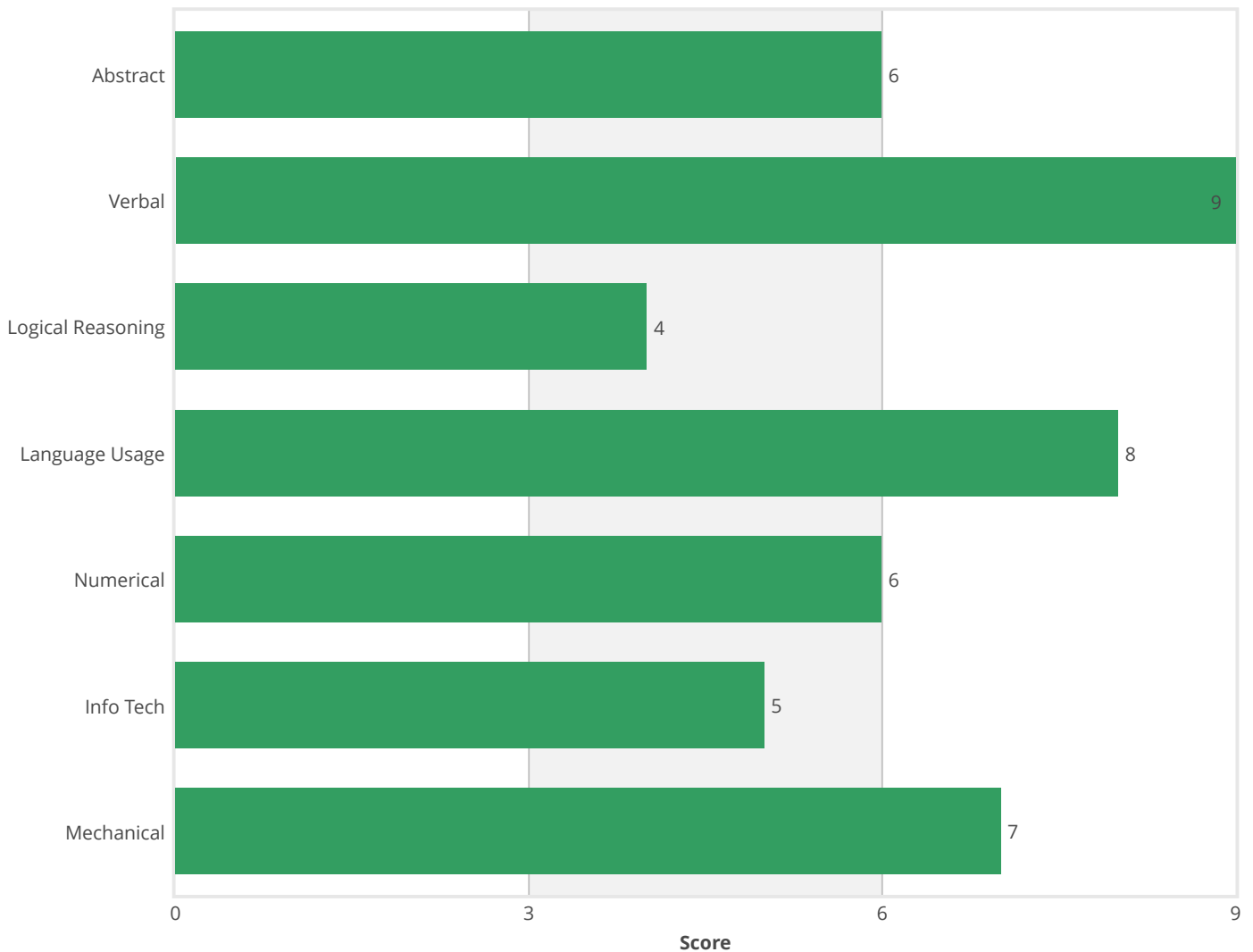
What is Aptitude?

Understanding your Aptitude will help you explore your innate strengths. Every individual has a unique area of expertise and their own forte. Aptitude assessment predicts what is your innate ability and potential and helps you find career options that are in sync with your aptitude.

Your Dominant Aptitude Strengths



Your Aptitude



Your Aptitude in Detail

* Abstract

1	2	3	4	5	6	7	8	9
---	---	---	---	---	---	---	---	---

Meaning

Ability to work with new concepts, abstract ideas & recognizing patterns and similarities

Expert Analysis

Your scores reflect that you are moderately skilled at working with new concepts, abstract ideas and recognizing patterns and similarities between them. Your scores also indicate that you are able to recognize the similarities and differences between ideas, or concepts which are not necessarily related at an average level. You are able to work out new concepts and deal with abstract ideas in most cases

Development Plan

Abstract aptitude can be developed by adopting following strategies:

- **Abstract ideas and concepts:** Give yourself a regular exposure to abstract ideas and concepts. Repeatedly examining information presented in abstract forms in books and newspapers will help you to develop a capacity for handling abstract information and looking for patterns. Try and solve puzzles, games and other forms of analytical material to enhance abstract way of thinking.
- **Patterns and relationships:** Purposefully seek patterns and relationships in things around you for enhancing abstract aptitude and outlook. You should also practice creating diagrams which represent relationships, connections and sequences

A Verbal

1	2	3	4	5	6	7	8	9
---	---	---	---	---	---	---	---	---

Meaning

Ability to comprehend words and sentences and deduce meaningful relationship from them

Expert Analysis

You are proficient at verbal skills such as correct usage of words, grammar, word meanings, and understanding word relationships. You are usually good at finding the right words to explain ideas and are able to interpret written and spoken instructions. You are also able to absorb communication without losing concentration or becoming confused or left behind. You can learn or extract new information quite fast

Development Plan

You have scored well in this trait

Your Aptitude in Detail



Logical Reasoning

1	2	3	4	5	6	7	8	9
---	---	---	---	---	---	---	---	---

Meaning

Ability to identify and isolate components of an argument to arrive at a complete inference and reach a conclusion

Expert Analysis

You have an average ability to apply logical reasoning to solve problems. At times you find it hard to detect the stronger arguments from the weaker ones. At times when you cannot find logical reason to support your stand, you may lean on emotional reasoning or rely on instincts

Development Plan

You can develop logical reasoning by practicing following strategies:

- **Play mind games:** You should try playing mind games such as chess, Sudoku, word games and other mystery games and puzzles that are easily available online. This will give you an understanding of the patterns and their individual elements and will help you in developing logical reasoning.
- **Practice & Perform non-routine tasks:** You should regularly practice open-mindedness and must make conscious attempt to figure out relationships among related or unrelated stimuli. Read books on logical reasoning and improve your skills by practicing a wide range of problem types.



Language Usage

1	2	3	4	5	6	7	8	9
---	---	---	---	---	---	---	---	---

Meaning

Ability to understand and use words along with the grammatical rules and structures to produce meaningful-novel sentences

Expert Analysis

You have a high capacity to understand and use words along with the grammatical rules and structures to produce meaningful and complex sentences. You have a high ability to detect errors in grammar, punctuation, and capitalization and are able to formulate diverse combinations of words and sentences

Development Plan

You have scored well in this trait

Your Aptitude in Detail

Numerical

1	2	3	4	5	6	7	8	9
---	---	---	---	---	---	---	---	---

Meaning

Ability to quickly grasp mathematical functions and to use them to analyze and solve mathematical problems

Expert Analysis

Your ability to deal with numbers is average. You are quite confident with your basic arithmetic abilities; however, with higher mathematical functions you may face some challenges. You are able to manipulate numbers with ease, however, with increased pressure you make mistakes and your ability to manipulate numbers diminishes

Development Plan

You can develop numerical ability by adopting following interventions:

- **Mental Imagery:** You have to try making mental imagery of the problems in terms of the numerical values of the elements involved in the problem. Constant effort will be helpful in enhancing numerical/ mathematical ability.
- **Practice and increase comfort with numbers:** You must progressively keep taking different tests on numerical ability to know your current level and further try to progress to a higher level.
- **Computer-simulated mathematical games:** You can try different computer applications, games and mobile apps that are known to enhance numerical ability

Info Tech

1	2	3	4	5	6	7	8	9
---	---	---	---	---	---	---	---	---

Meaning

Ability to grasp and use principles and concepts of technology and computer programs to solve problems

Expert Analysis

You have an average understanding of the principles and concepts of technology. Your responses indicate that you are aware about the basic computer programs and its applications. You are moderately comfortable when it comes to handling computer software. Your awareness about latest technologies and software is average. You have to put some effort in order to learn the working of new gadgets or software

Development Plan

You can develop info-tech aptitude by following the given interventions:

- **Joining a computer course/program:** One of the best ways to develop and enhance info-tech aptitude is by joining a basic computer course and later on doing an advanced-level program
- **Exposure to technology, computer programs and applications:** You can develop the info-tech aptitude by extending your exposure towards technology, various computer programs and applications. Try and get hands on experience of various applications with different features.

Your Aptitude in Detail



Mechanical

1 2 3 4 5 6 7 8 9

Meaning

Ability to grasp and use mechanical concepts and principles to solve problems

Expert Analysis

You have a natural understanding of forces and dynamics. You have good knowledge and understanding of mechanical and other physical principles. You are very perceptive of basic mechanical principles, simple machines, tools, electrical, and automotive facts. You are analytical and receptive as you can see a number of forces and factors operating within a problem at any given time

Development Plan

You have scored well in this trait

Your Dominant Style



Creative
Orientation



People
Orientation

Your Dominant Interests



Designing



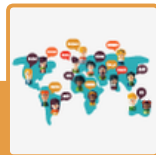
Economics



Political Science



Accounts



Language

Your Dominant Personality



Perseverance



Team Work



Decision Making
Capacity

Your Dominant Aptitude



Verbal

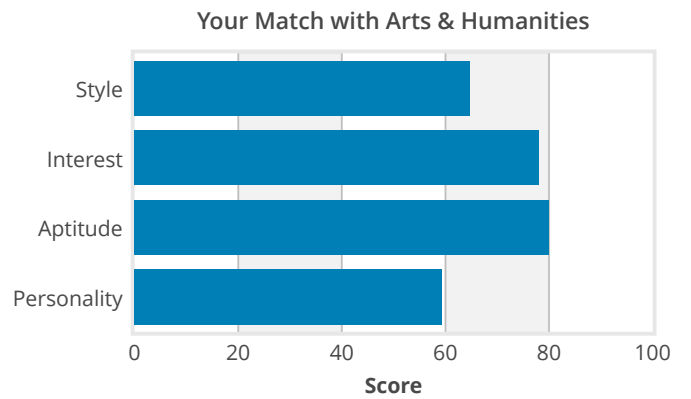


Language Usage



Mechanical

Stream Match with Arts & Humanities



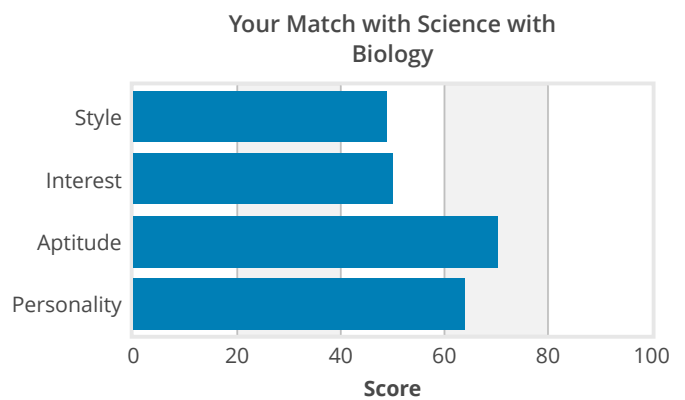
Arts & Humanities stream has a wide range of opportunities in today's world. Some of the interesting subjects covered in this stream include History, Geography, Political Science, Psychology, Sociology, Economics, Mathematics, Philosophy, Languages, Literature, Performing Arts, and Anthropology etc. You can do a BA (Bachelors of Arts) program & later on do an MA (Masters Degree) & also opt for a Ph.D. Degree in your interest area / respective subject.

Some of the attractive career options for this stream are Economist, Market analyst, Sociologist, Social Worker, Historian, Mass Communication, Journalist, Psychologist, Counselor, Rural Marketing, Law & Public Policy, Human Rights Activist, Anthropologist, School Teacher or College Professor.

One may also look to excel in areas of performing arts like Dance, Music, Theatre or specialize in various design domains like Fashion, Jewelry, Footwear, Interior, Graphic Design etc. Another interesting avenue is the domain of Applied Arts where one can study courses like Photography, Cinematography and Fine Arts.

[Read more about Arts & Humanities >](#)

Stream Match with Science with Biology



This stream brings together Physics, Chemistry, Biology, English, and an optional subject, and is the gateway to careers in medicine and allied fields. Besides Medicine (M.B.B.S), one can also pursue Dentistry, Biotechnology, B.Pharm, Homeopathy and Ayurveda medicine as well. A keen desire or passion to have knowledge about science is a prerequisite in these careers. You can also think of studying allied medical disciplines like radiology, physiotherapy, paramedics, nursing, optometry etc. You can also pursue bachelors in Life Science domains like Zoology, Botany, Biochemistry or Biotechnology & Molecular biology, which are emerging to be one of the most sought after areas of employment.

[Read more about Science with Biology >](#)

GOT ANY QUESTIONS?

Consult with our experts



<https://students.anagat.com>

09825799756

director@anagat.com